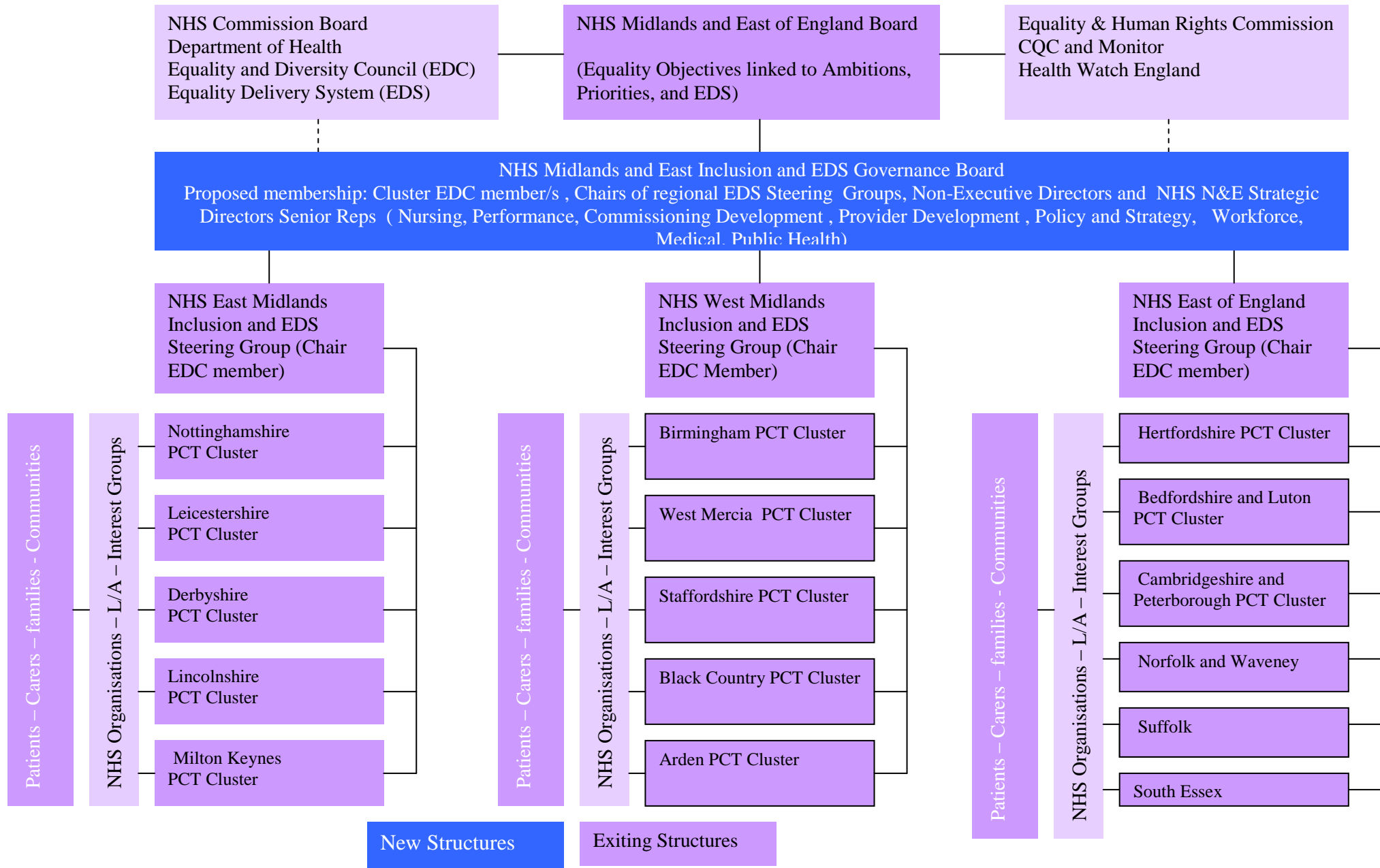


NHS Midlands and East

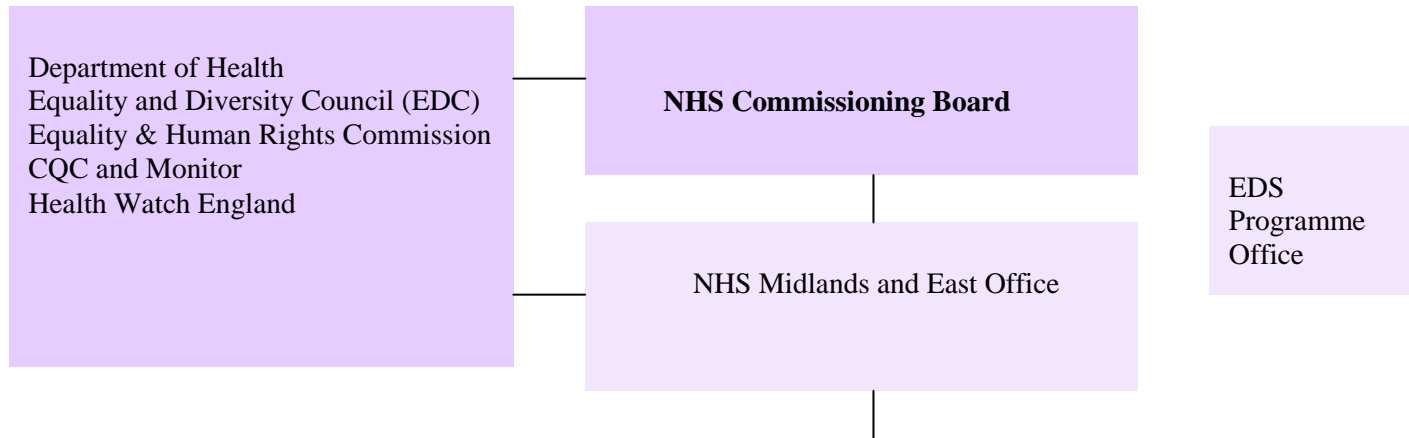
Proposed Inclusion and EDS Governance Structure 2011-2013

Appendix C



NHS Commissioning Board: Midlands and East Office

Proposed Inclusion and EDS Governance Structure 2013 onwards



Equality and Diversity Governance Network
 (Chair: Director of Performance/Nominated EDC NHS Chief Executive)
 Proposed membership: senior representatives of CCGs and NHS Providers

